

Land Transaction

Commission Meeting May 17, 2024

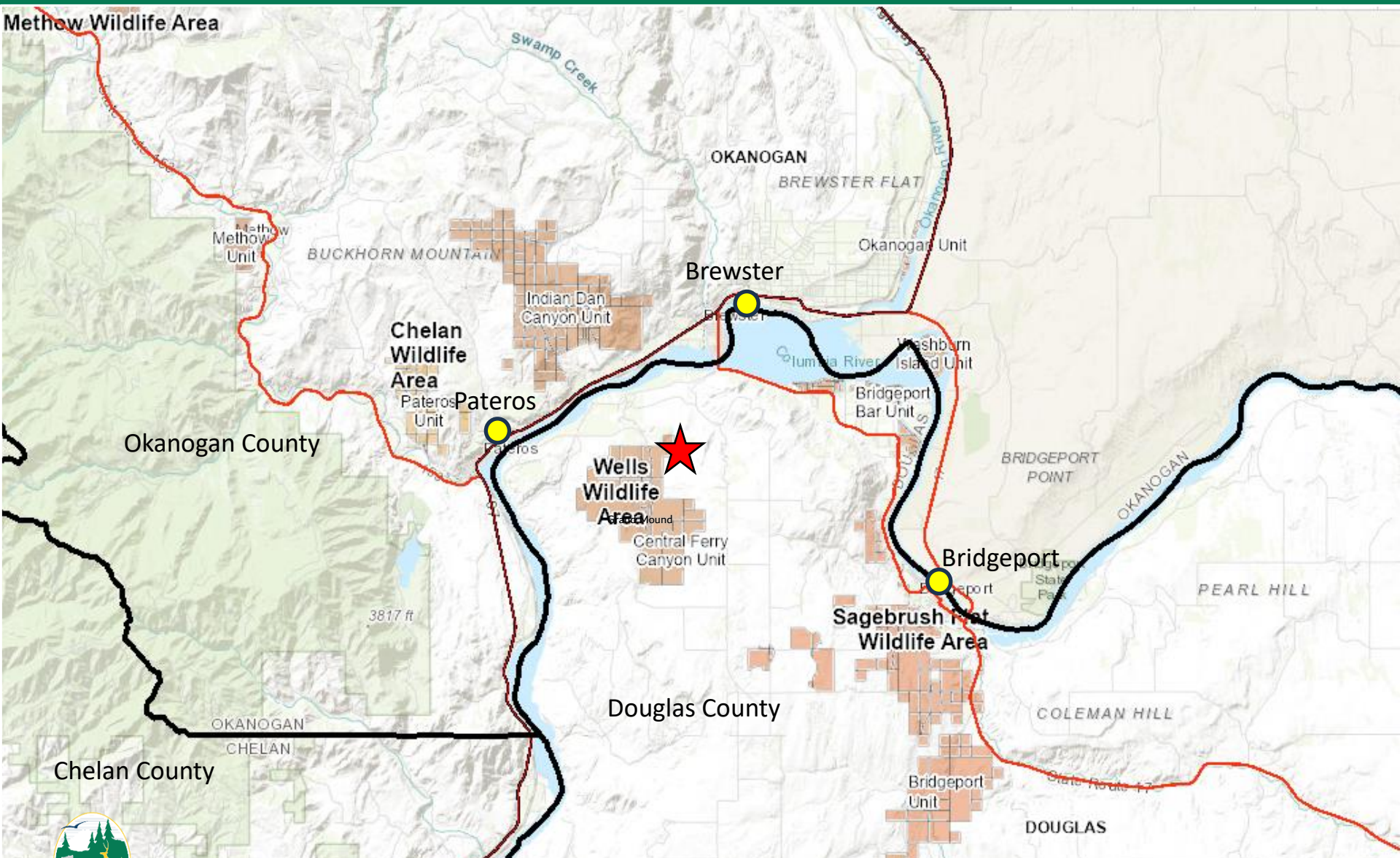
Lisa Coffman, Real Estate Services
Wildlife Program/Lands Division



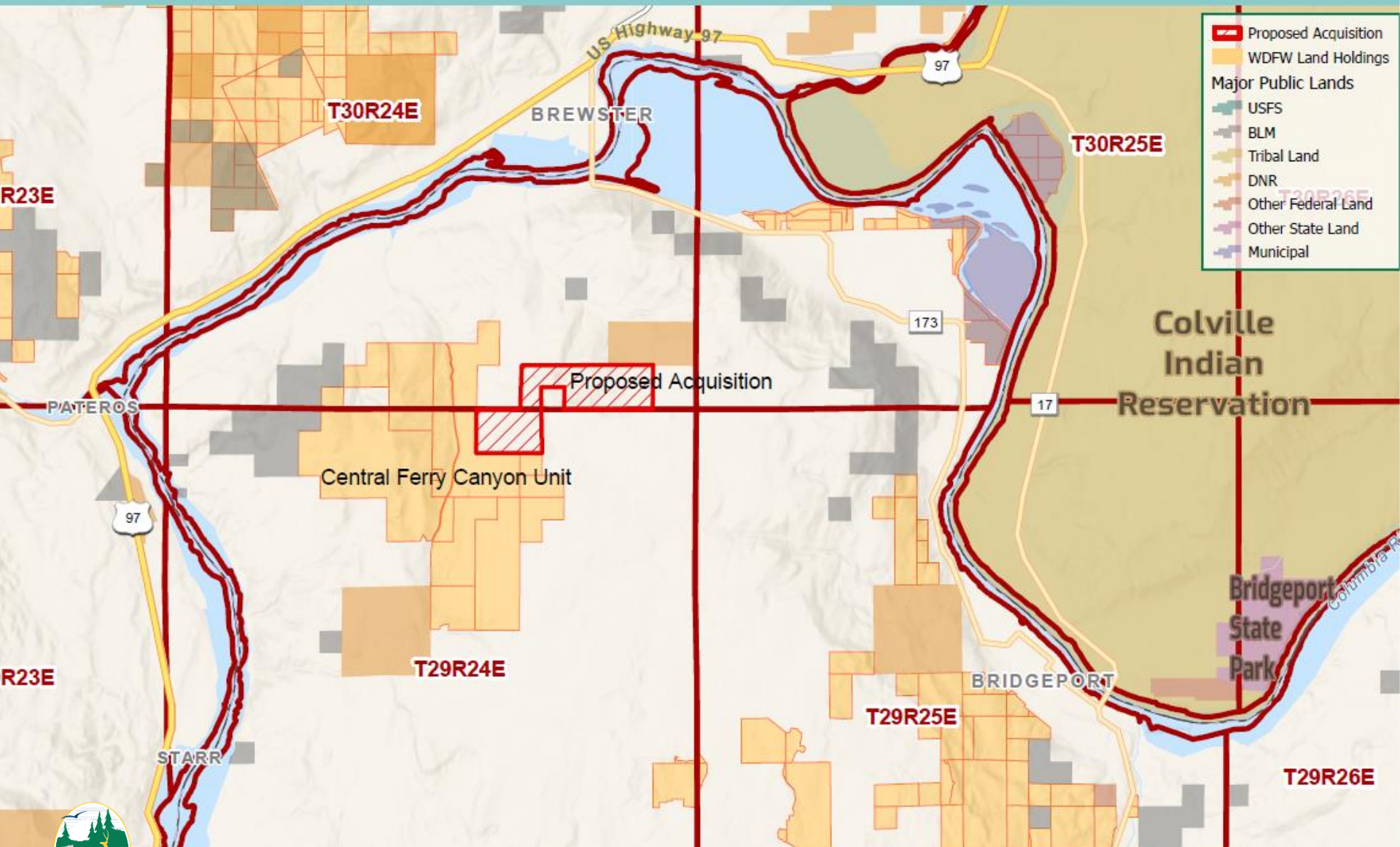
Acquisition of 672(+/-) Acres in Douglas County, Region 2 Central Ferry Canyon Unit, Wells WLA, Central Ferry Canyon Phase 2



Acquisition of 672(+/-) Acres in Douglas County, Region 2 Central Ferry Canyon Unit, Wells WLA, Central Ferry Canyon Phase 2





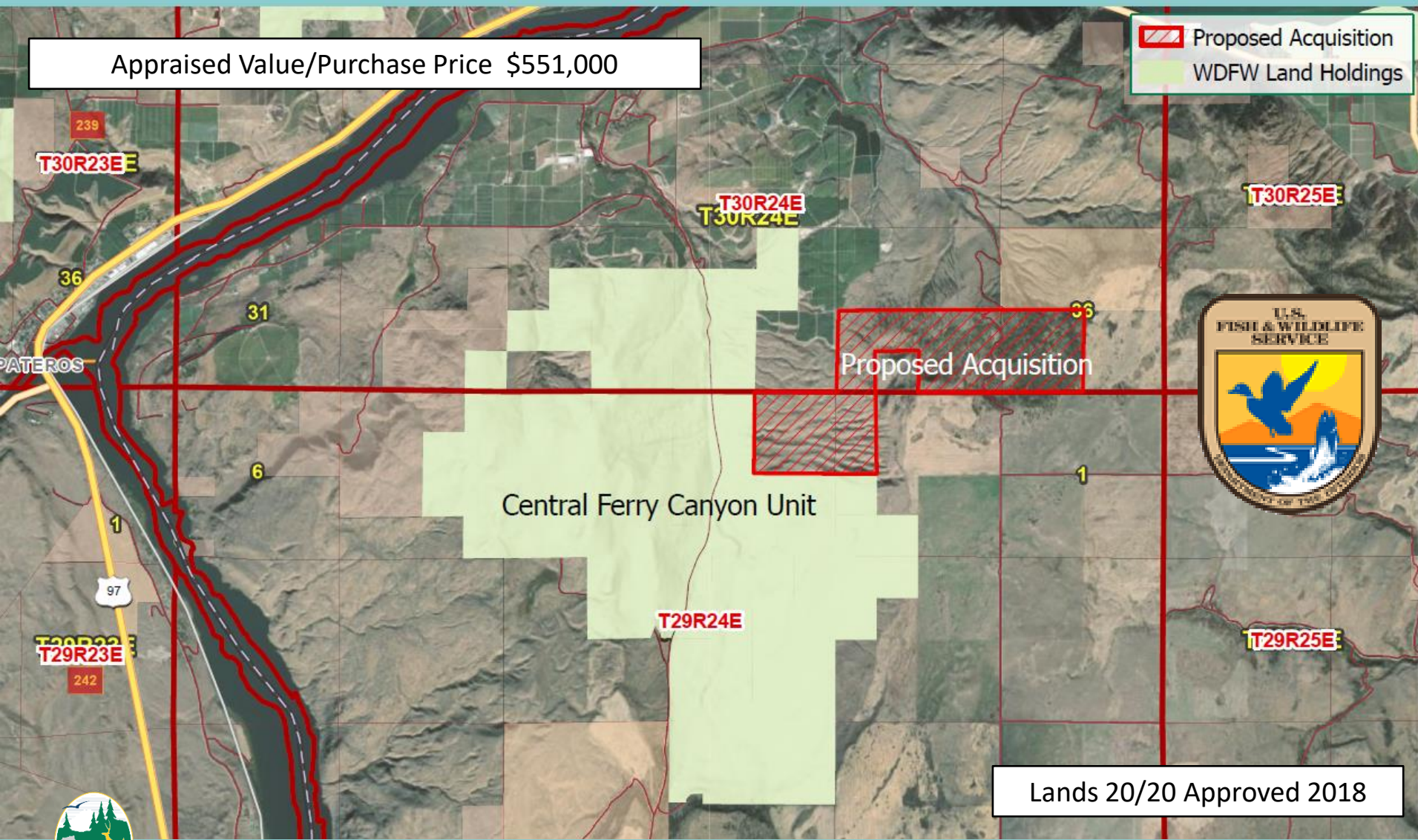
Acquisition of 672(+/-) Acres in Douglas County, Region 2 Central Ferry Canyon Unit, Wells WLA, Central Ferry Canyon Phase 2



Acquisition of 672(+/-) Acres in Douglas County, Region 2 Central Ferry Canyon Unit, Wells WLA, Central Ferry Canyon Phase 2

Appraised Value/Purchase Price \$551,000

 Proposed Acquisition
 WDFW Land Holdings



Proposed Acquisition

Central Ferry Canyon Unit

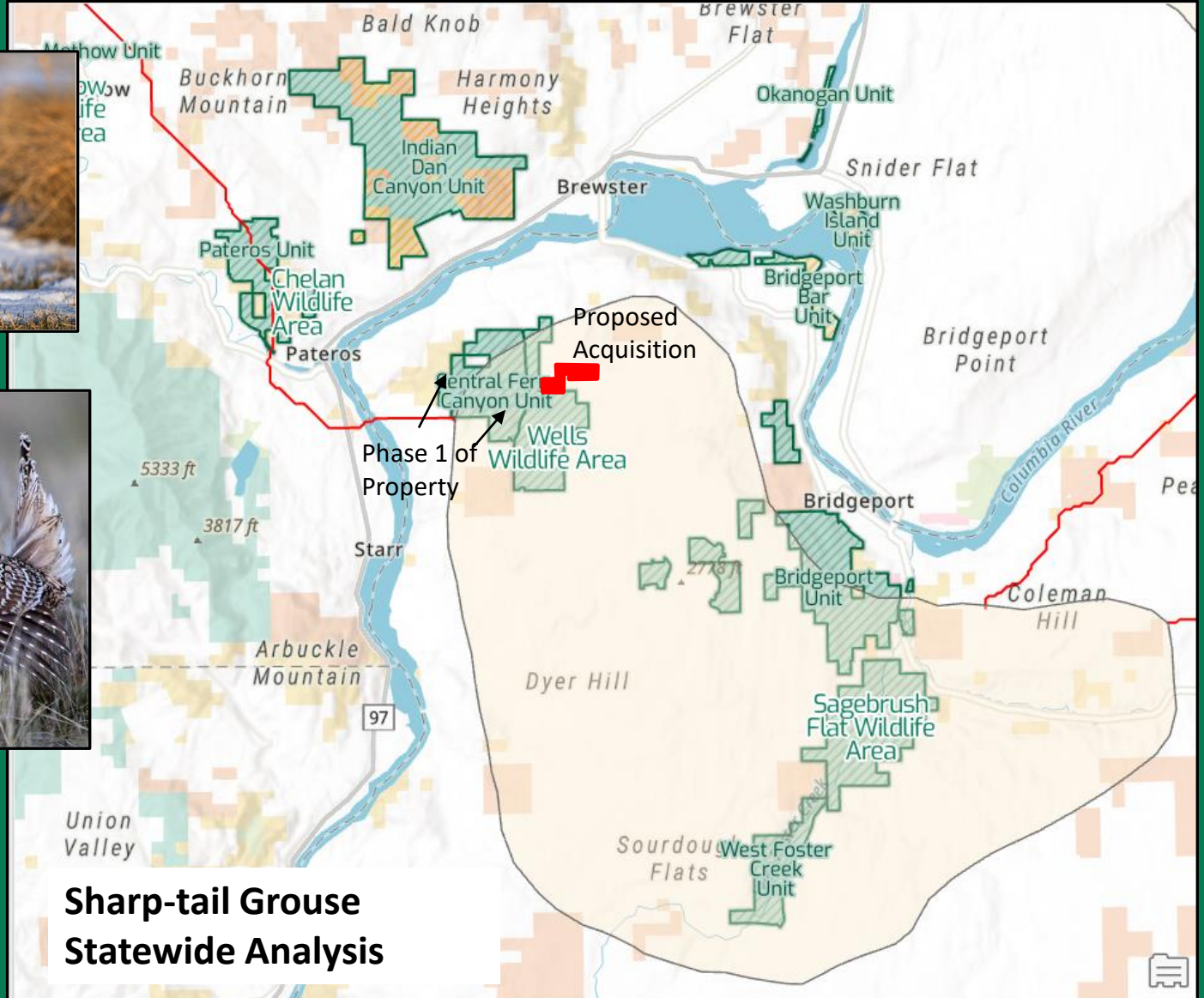
Lands 20/20 Approved 2018



Acquisition of 672(+/-) Acres in Douglas County, Region 2 Central Ferry Canyon Unit, Wells WLA, Central Ferry Canyon Phase 2



Acquisition of 672(+/-) Acres in Douglas County, Region 2 Central Ferry Canyon Unit, Wells WLA, Central Ferry Canyon Phase 2



**Sharp-tail Grouse
Statewide Analysis**



Questions

